



HOOPZ BASKETBALL

SAM LEWIS — BASKETBALL ENGLAND

ADAM BONE — ACCESS SPORT

#TOGETHERWEAREBASKETBALL

WWW.BASKETBALLENGLAND.CO.UK

AGENDA

- A partnership between Basketball England and Access Sport
- Hoopz Basketball
- Support for Clubs
- Example Approaches
- Who can apply to be a Hoopz Basketball deliverer?
- How to get involved





A PARTNERSHIP BETWEEN BASKETBALL ENGLAND & ACCESS SPORT

PARTNERSHIP

- Basketball England – National Governing Body for Basketball
- Access Sport – A leading sports inclusion charity supporting disabled young people and those from under-served communities to access inclusive sport and physical activity opportunities. We work with sports clubs and community organisations to develop their inclusive provision to welcome Deaf and disabled people and their families into their communities and benefit from regular activity.
- We have been working together for the past six months
- A formal partnership was created to enable disability-inclusive basketball to be delivered across the country using the combined expertise of both organisations
- The emphasis will be on developing sessions to improve physical activity opportunities for disabled people
- ...which brings us to Hoopz Basketball!





HOOPZ BASKETBALL

HOOPZ BASKETBALL

- Hoopz is pan-disability inclusive basketball supporting disabled and non-disabled people to develop, learn, play, and join the basketball community. We want to support local basketball clubs and youth groups to deliver inclusive activities for disabled people with a range of needs and abilities.
- We know that disabled people want to participate in inclusive activity, playing with other disabled and non-disabled people too.
- Specific sessions aimed at engaging disabled people and their wider social/family circle to engage in sport – which is now more important than ever, thanks to COVID-19's disproportional affect on the physical activity levels of disabled people



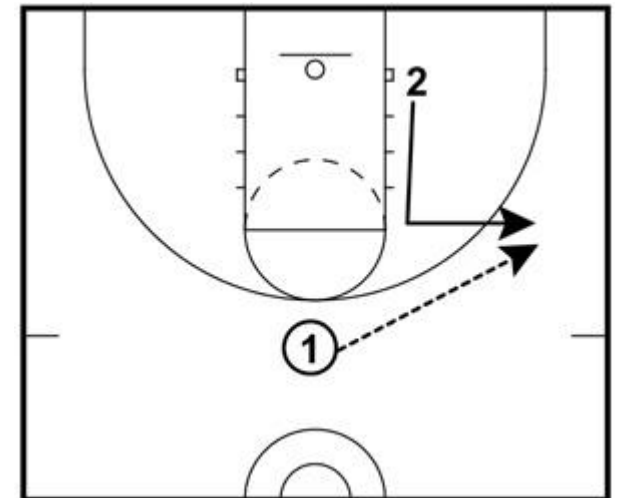
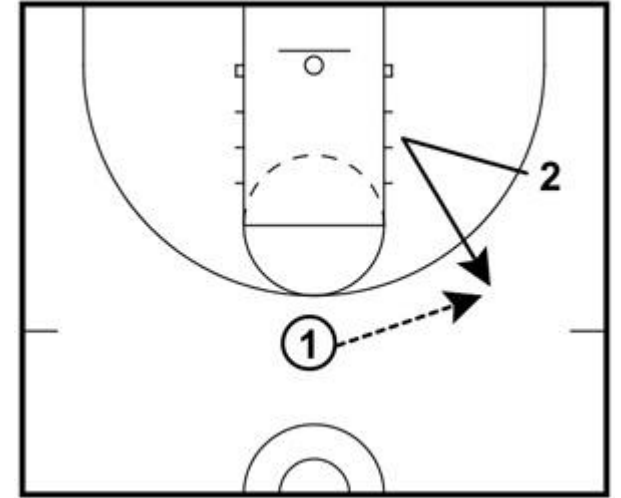
SUPPORT FOR CLUBS

- Tailor-made and accredited Disability Inclusion Training delivered to club coaches and volunteers FOR FREE, financial and general ongoing support provided by Basketball England and Access Sport together
- Each Hoopz offering is bespoke to meet needs and demand on organisation/club resources (particularly workforce) and local community – there is no one-size-fits-all approach but there must be a commitment to deliver a minimum of 6 months' worth of delivery
- We will develop a network of Hoopz clubs and groups to support more disabled people and their families to access basketball
- More inclusive and engaging community to grow the game and your club



EXAMPLE APPROACHES

- As mentioned, there is no one-size-fits-all for Hoopz, and this should be seen as an advantage as it means that we can support you to deliver inclusive opportunities in a way which truly work for you, your club, and your community
- One approach could be to adapt your existing sessions and approach to be more actively inclusive, engaging local disability sports groups and inviting them into your club
- Another approach could be to establish a new session which is fully inclusive from the outset, attracting new players by running outreach at local schools, colleges, or events
- ...or you could do a mixture of the two! Basketball England and Access Sport are here to support you to build your approach to Hoopz basketball in a way that has the greatest possible impact.





**WHO CAN APPLY TO BE A HOOPZ
DELIVERER?**



WHO CAN('T) APPLY TO BE A HOOPZ BASKETBALL DELIVERER (FUNDING)

Can:

- Basketball England affiliated club
- Community Interest Company or other incorporated organisations (except private limited company)
- Charities
- A constituted community (non-basketball) group

Can't:

- Private limited companies and for-profit organisations
- Individuals/sole traders
- Government funded organisations e.g. schools/education



HOW TO GET INVOLVED

HOW TO GET INVOLVED

- Arrange 30 minute informal chat with Sam Lewis and Adam Bone around what your Hoopz session could look like
- Disability Inclusion and Awareness Training
- Complete online application form for funding:
<https://www.basketballengland.co.uk/get-involved/clubs/funding/>

KEY AREAS OF PLAN

- Engagement with disabled people and groups
- Understanding the impact that COVID-19 has had on disabled people
- What delivery looks like e.g. session frequency, length, etc.





THANK YOU

PLEASE REACH OUT TO FIND OUT MORE:

SAM LEWIS — BASKETBALL ENGLAND — SAM.LEWIS@BASKETBALLENGLAND.CO.UK

ADAM BONE — ACCESS SPORT — ADAM.BONE@ACCESSSPORT.CO.UK

#TOGETHERWEAREBASKETBALL

WWW.BASKETBALLENGLAND.CO.UK